



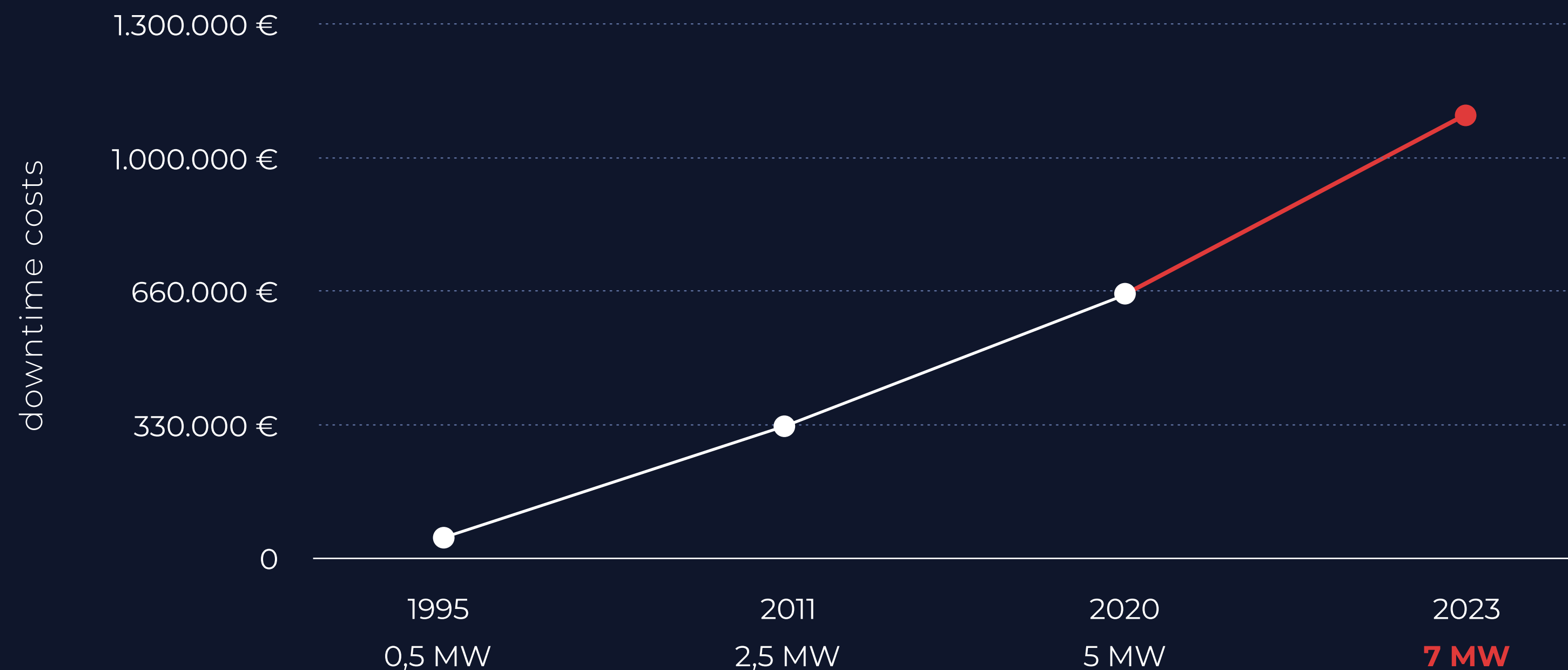
# EFICIENCIA OPERATIVA IMPULSADA POR IA

Andrea Bilbao, Head of Customer Success,  
Jornada Operativa de Parques Eólicos, 02/10/2025



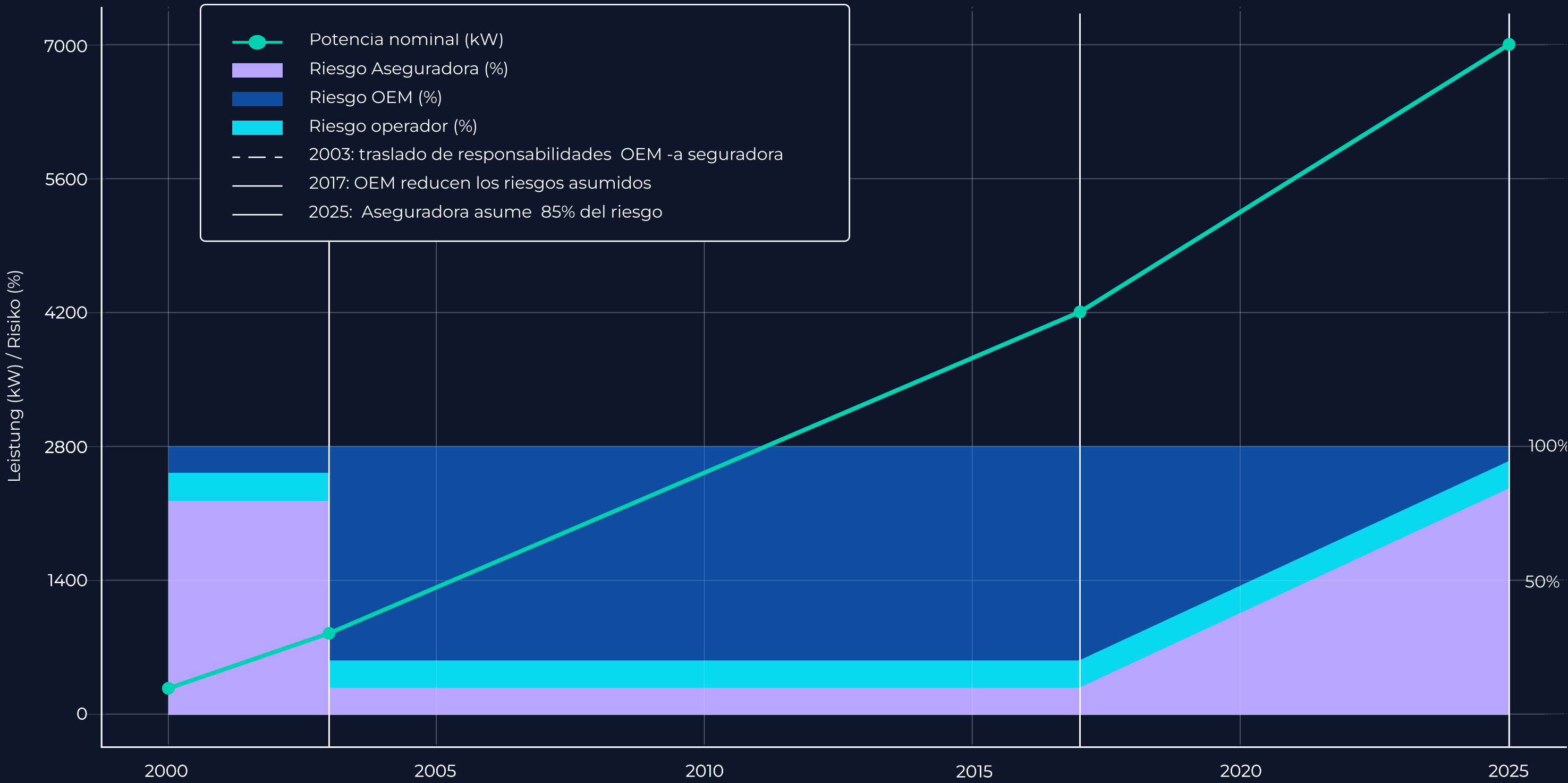
# LAS GARANTÍAS TRADICIONALES NO ESCALAN CON EL TAMAÑO DE LOS AEROGENERADORES

Costos por tiempo de inactividad por turbina durante 12 meses por MW.



**RIESGO  
AUMENTA**  
**QUIÉN LO ASUME?**

# TRANSFERENCIA DE RIESGO A LO LARGO DEL TIEMPO: OEM, OPERADORES, SEGUROS



## CONSECUENCIAS ASEGURADORAS

1. Aumento precios
2. Transferir el riesgo a los operadores
3. Salir de la industria

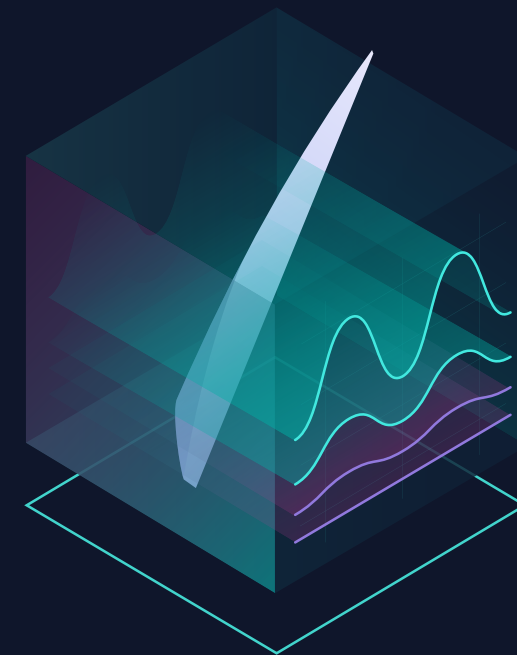
**ALTERNATIVA?**

# TURBIT INTELLIGENCE.



## TURBIT MONITORING

Maximize Asset Health  
and Performance with  
AI.



## BLADE MONITORING

Maximize Blade Health  
with AI.



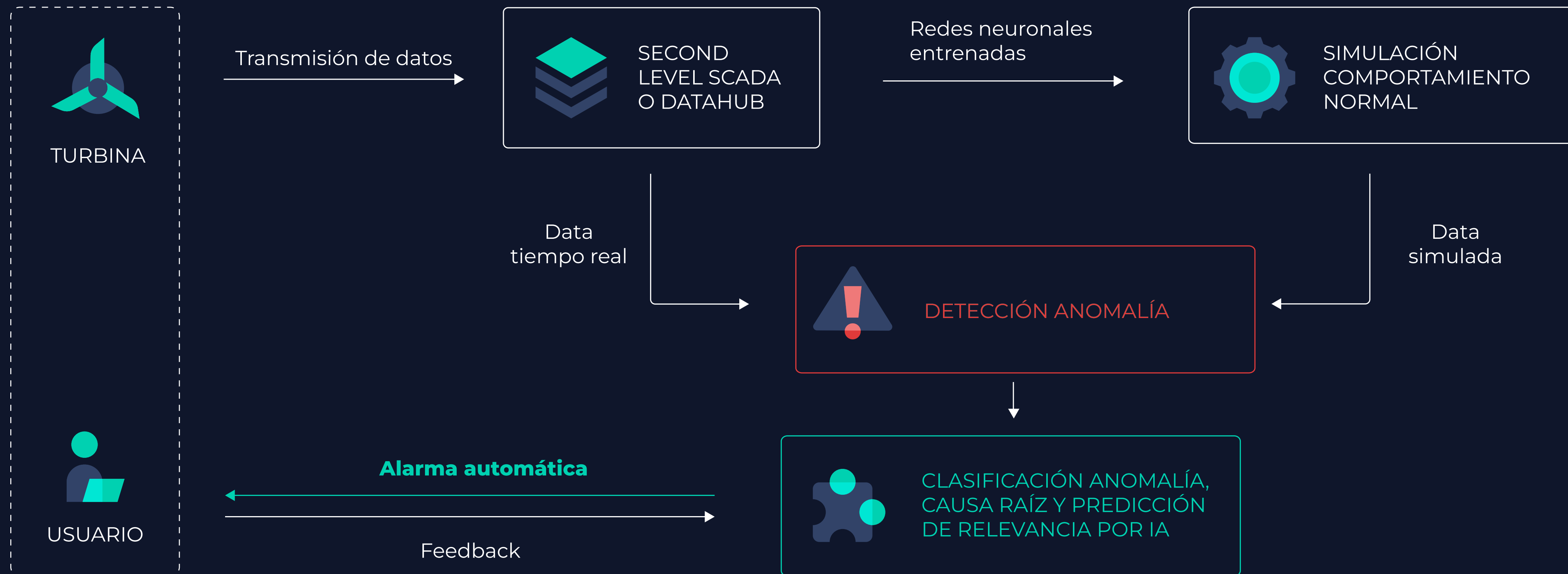
## TURBIT ASSISTANT

Supercharge  
operations with a  
powerful, tailored AI  
Assistant.

**IA ACCIONABLE PARA DECISIONES  
PREVENTIVAS, RÁPIDAS Y BASADAS  
EN DATOS**



# TURBIT MONITORING

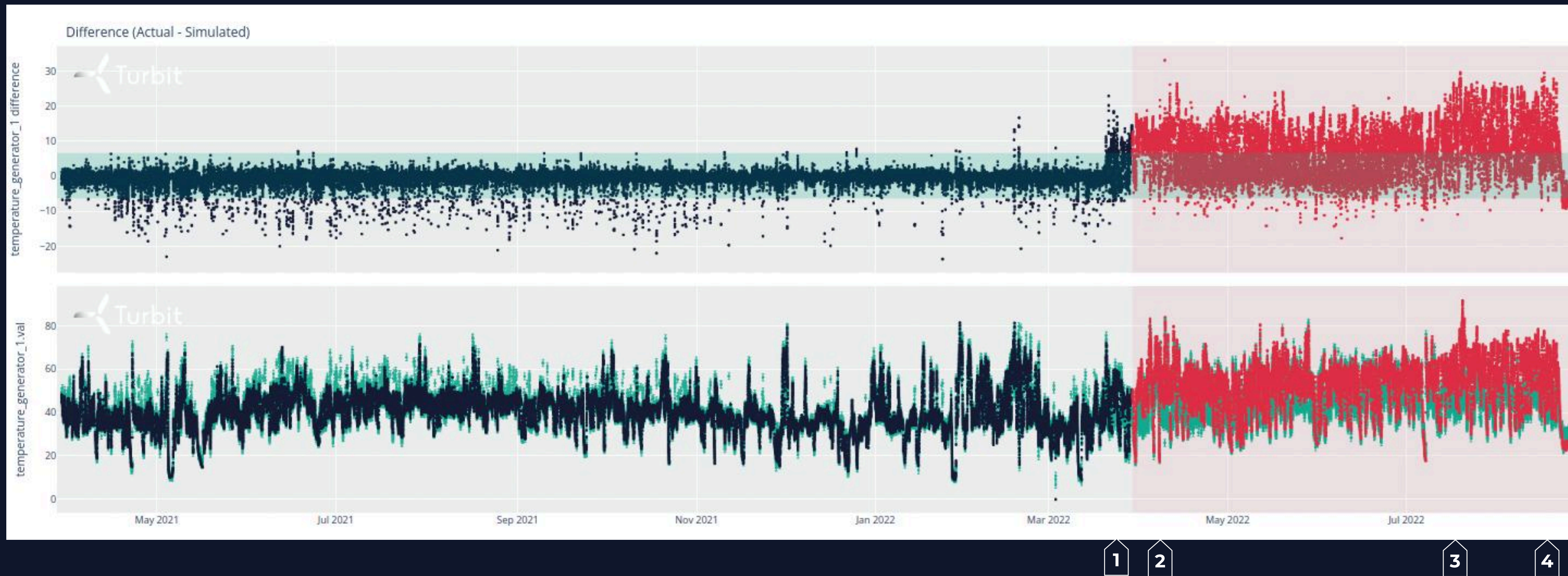






# TURBIT MONITORING

## SUCCESS STORY



● Simulation ○ SCADA ● Outlier

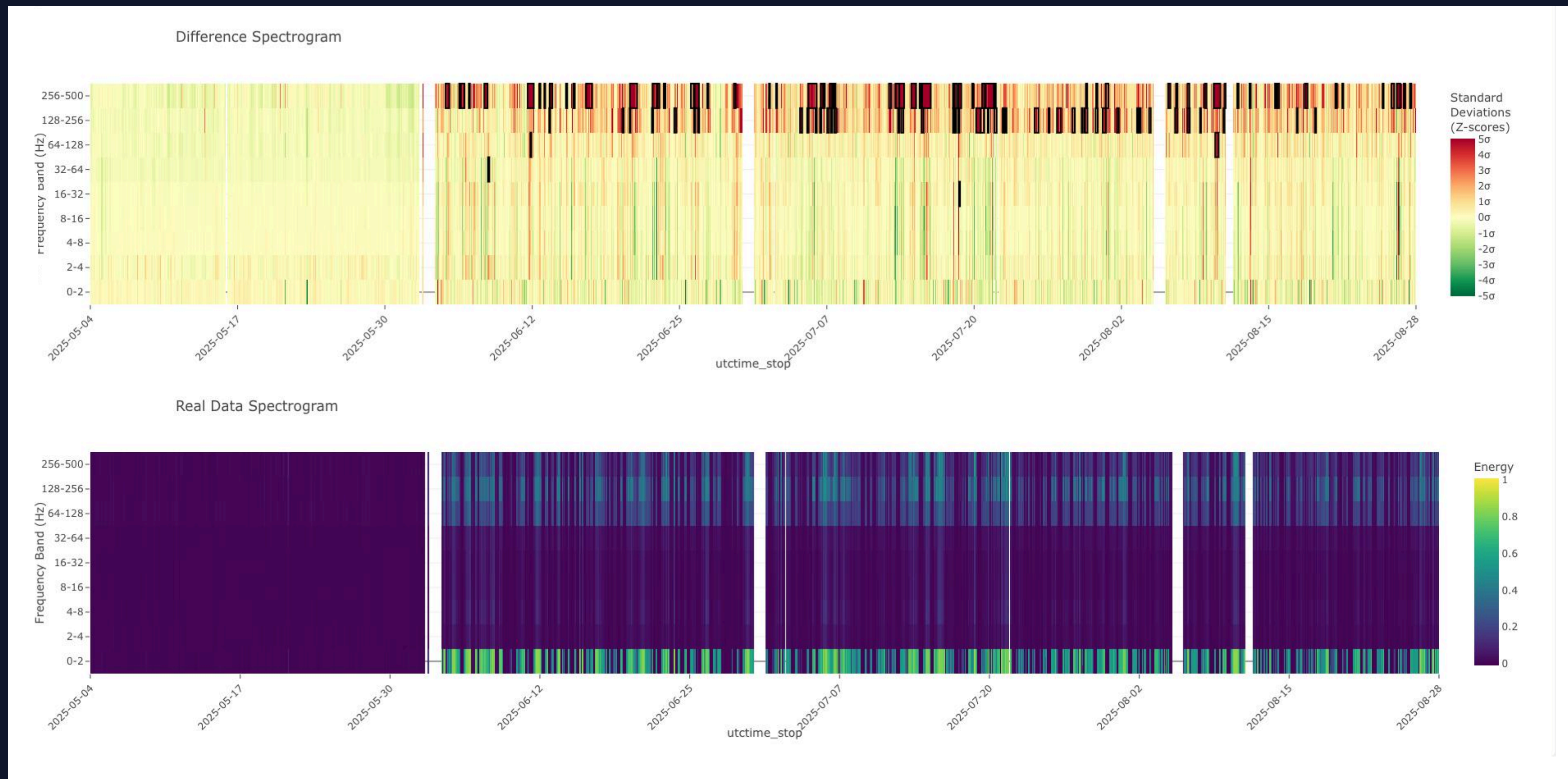






# BLADE MONITORING

## SUCCESS STORY







**TURBIT  
ASSISTANT**

**40%**  
**TIEMPO  
EMPLEADO EN  
“BUSY WORK”**



BÚSQUEDA EN  
DOCUMENTOS

GESTIONAR FALLAS Y RESOLVER  
RETRASOS EN LA SOLUCIÓN DE  
PROBLEMAS



# TURBIT ASSISTANT

LECTURA Y RESUMEN DE  
MÚLTIPLES DOCUMENTOS

LISTA DE SEGUIMIENTO DE  
DEFECTOS AUTOMÁTICAMENTE  
ACTUALIZADA

## PLURIHOP RAG

30-78% MEJORA DE RESPUESTA  
CON RESPECTO A RAG  
CONVENCIONALES

According to report of Windpark-Two are there any actions required? If so, give me a list of actions per wind turbine.

- W02T01:**
- Immediate attention required for the main gearbox.
  - Monitor the condition of the main/rotor bearing, as it shows early signs of wear.
- W02T02:**
- Routine inspection needed for the main gearbox due to minor discrepancies in operational data.
  - No immediate actions required for the main/rotor bearing.

Doc 1.pdf

Please update the defect list of Turbine W03T03 with data from the attached document.

Priority	Source	Component	Date of Initial Idenitifaction	Issue Description	Timeline	Update
Medium	W03T03	Main gearbox	2016-04-25	Oil contamination detected; high zinc levels suggest mixing with zinc-containing oil or residues. Cleanliness below recommended standard.	2016-04-25: Contamination detected, filter replacement advised. 2019-07-16: Increased copper levels, but oil within standards. Further monitoring advised.	Report confirms oil cleanliness meets standards. No new defects. Priority remains Medium.

[1] 337.pdf

Please update the defect list of Turbine W03T03 with data from the attached document.

Priority	Source	Component	Date of Initial Idenitifaction	Issue Description	Timeline	Update
Resolved	W03T03	Main gearbox	2016-04-25	Contamination detected in oil; high zinc levels suggest mixing with zinc-containing oil or residues. Oil cleanliness below recommended standard.	2016-04-25: Contamination detected, filter replacement advised. 2019-07-16: Increased copper levels, but oil within standards. 2022-10-23: All values within tolerance, no deviations.	Latest lab report confirms contamination resolved. Priority updated to Resolved.

[1] 316.pdf



**TURBIT  
BLUE**





**EL FUTURO DE LA ENERGÍA EÓLICA  
SERÁ COLABORATIVO, O NO SERÁ.**

**CONECTEMOS.**



**Andrea Bilbao**

Head of Customer Success

[a.bilbao@turbit.de](mailto:a.bilbao@turbit.de)

[www.turbit.com](http://www.turbit.com)

